

CORDUSIO RMBS SECURITISATION S.r.l. - SERIES 2008

INVESTOR REPORT

Securitisation of a portfolio of performing mortgage loans owned by
UniCredit Banca per la Casa S.p.A.

Euro	22,250,000,000	Class A	Mortgage-Backed Floating Rate Notes due December 2060
Euro	1,539,098,370	Class B	Mortgage-Backed Floating Rate Notes due December 2060

Investor Report Date	07/01/2011	
Quarterly Collection Period	01/09/2010	30/11/2010
Interest Period	30/09/2010	31/12/2010
Interest Payment Date	31/12/2010	

This Investors Report (the "Report") has been prepared by UniCredit Bank AG, London Branch ("UCB"), a member of the UniCredit Group, in its role as Calculation/Computation Agent and is based, inter alia, on the Servicer Reports prepared by the Servicer as well as data provided to UCB by other third parties. Although such information has been obtained from sources believed to be reliable, neither UCB, nor its subsidiaries or affiliates, or any of their respective directors, managers, officers or employees makes any representation as to their fairness, accuracy, completeness or reliability or shall have any responsibility or liability for any loss or damage howsoever arising from or otherwise in connection with the use of this Report.

This Report is not for retail customers (as defined by the European Markets in Financial Instruments Directive) and persons into whose possession or attention this document comes must inform themselves about, and strictly observe, any such restrictions. This Report is provided for information purposes only and does not constitute or form part of, nor may be construed so as to constitute or form part of, an offer, or the solicitation of any offer, to buy, sell or subscribe for any securities mentioned herein, nor is it intended to provide an evaluation of the risk related to an investment in such securities or for use by any person in making investment decisions. By accepting this Report, you agree to be bound by the foregoing restrictions. The information provided in the Report can not substitute the obtaining of independent financial advice.

UniCredit Bank AG is supervised by the German Federal Financial Supervisory Authority (BaFIN). It is incorporated in Germany with limited liability.

If this Report has been sent to you in electronic form, you are reminded that documents transmitted via this medium may be altered or changed during the process of electronic transmission and consequently none of UCB, its subsidiaries or affiliates or any of the directors, officers or employees thereof, accepts any liability or responsibility whatsoever in respect of any difference between the documents distributed to you in electronic format and the hard copy version available to you on request from UCB.

CORDUSIO RMBS SECURITISATION S.r.l. - SERIES 2008 - DESCRIPTION OF THE NOTES

Issuer: Cordusio RMBS Securitisation S.r.l. - Series 2008
Issue Date: 13/11/2008
Sole Arranger: UniCredit Bank AG, London Branch
Sole Lead Manager: UniCredit Bank AG

Series	Class A	Class B
Amount issued	22,250,000,000.00	1,539,098,370.00
Currency	Eur	Eur
Final Maturity Date	Dec-60	Dec-60
Listing	Irish Stock Exchange	Irish Stock Exchange
ISIN Code	IT0004431208	IT0004431281
Common Code	039934400	- - -
Clearing System	Clearstream Euroclear	Clearstream Euroclear
Indexation	Euribor 3 M	Euribor 3 M
Spread at Issuance	100	500
Rating Mody's	Aaa	Unrated

Originator: Unicredit S.p.A. (formerly Unicredit Family Financing Bank S.p.A.)
Servicer: Unicredit S.p.A. (formerly UniCredit Banca S.p.A.)
Interest Day Count: Actual/360
Corporate Servicer: UniCredit Credit Management Bank S.p.A.
Computation Agent: UniCredit Bank AG, London Branch
Account Bank: Unicredit S.p.A. (formerly Unicredit Family Financing Bank S.p.A.)
Principal Paying Agent: BNP Paribas Securities Services S.A.
Representative of Noteholders: Securitisation Services S.p.A.
Swap Counterparty: UniCredit S.p.A.

CORDUSIO RMBS SECURITISATION S.r.l. - SERIES 2008 - ISSUER AVAILABLE FUNDS

	<i>Euro</i>		<i>Euro</i>
TOTAL ISSUER INTEREST AVAILABLE FUNDS	171,548,885.43	TOTAL ISSUER PRINCIPAL AVAILABLE FUNDS	576,075,856.20
(a) Interest Components related to the Mortgage Loans received by the Issuer	165,119,414.79	(a) All Principal Components related to the Mortgage Loans received by the Issuer	553,461,896.63
(b) Without duplication of (a) above Interest Components invested in Eligible Investments	-	(b) Without duplication of (a) above Principal Components invested in Eligible Investments	-
(c) All net interest amounts on the UBCasa Accounts received by the Issuer	1,888,354.56	(c) The principal Deficiency Ledger Amount calculated at the Calculation Date	22,612,433.78
(d) All amounts received from the Swap Counterparty by the Issuer	-	(d) Funds Provisioned for Amortisation (up to the First Amortisation Interest Payment Date)	1,525.78
(e) All amounts from any party to the Transaction Documents received by the Issuer	-	(e) Any proceeds deriving from the sale of Claims under the Transaction Documents (other than Defaulted Claims)	-
(f) All the Revenue Eligible Investments Amounts received by the Issuer	-	(f) Any amount credited and/or retained on each IPD under items (x) and (xi) of the Pre-Enforcement Interest Priority of Payment	-
(g) All other amounts standing to credit of the Collection Account and the Payments Account (excluding any Principal Available Funds)	-	(g) Any other amount received from the Originator under the Warranty and Indemnity Agreement	-
(h) the lower of (i) the portion of the Cash Reserve which is equal the shortfall and (ii) the Cash Reserve	-	(h) On the Calculation Date immediately preceding the Calculation Date after the Final Redemption Date, the balance standing to the credit of the Expenses Account	-
(i) On the Calculation Date immediately preceding the date on which the Class A Notes will be redeemed in full, the amount standing to the credit of the Cash Reserve Account at such date	-		
(j) On each Calculation Date, the portion of the Renegotiation Reserve, being equal to the Quarterly Renegotiation Loss occurred in the immediately preceding Collection Period as a consequence of the renegotiation of the Mortgage Loans	4,541,116.09		
(k) On the Calculation Date immediately preceding the date on which the Class A Notes will be redeemed in full, the amount standing to the credit of the Renegotiation Reserve Account at such date	-		
TOTAL ISSUER AVAILABLE FUNDS	725,012,307.85		

CORDUSIO RMBS SECURITISATION S.r.l. - SERIES 2008 - PRIORITY OF PAYMENTS

PRE-ENFORCEMENT INTEREST PRIORITY OF PAYMENT

		<i>Euro</i>
	TOTAL ISSUER INTEREST AVAILABLE FUNDS	171,548,885.43
First	Taxes due and payable by the Issuer (if Expenses Account is insufficient or if not paid by UBCasa)	-
Second	Issuer/RoN expenses	
	a) Corporate fees, expenses of Issuer	72,146.36
	b) Fees, taxes, expenses and costs due for the listing, deposit or ratings of the Notes	-
	c) Fees, expenses to be paid to the RoN	3,625.20
	d) Amount necessary to replenish the Expenses Account up to Retention Amount	189.24
Third	Third Party Fees and Expenses:	
	a) Principal Paying Agent and Listing Agent fees and expenses	-
	b) Agent Bank fees and expenses	750.00
	c) Computation Agent fees and expenses	20,000.00
	d) Servicer fees and expenses	1,942,246.00
	e) Corporate Servicer fees and expenses	26,871.89
	f) Account Bank fees and expenses	-
	g) Custodian fees and expenses	30,158.32
Fourth	Amounts due to the Swap Counterparty	63,193,370.64
Fifth	Instalment Premiums payable to the Originator	12,214.78
Sixth	Interest on Class A Notes	83,634,879.22
Seventh	Class A PDL reduction to zero	-
Eighth	Reduction of Junior Notes PDL to zero	22,612,433.78
Ninth	Cash Reserve Account replenishment till Target Cash Reserve Amount (if any Rated Notes o/s)	-
Tenth	Credit and/or retain the remainder of the Interest Available Funds to the Principal Account if Junior Notes Trigger Event has occurred (if any Rated Notes o/s)	-
Eleventh	Credit or retain an amount equal to the Principal Available Funds utilized under item (i) of the Pre-Enforcement Principal Priority of Payments	-
Twelfth	Credit the Renegotiation Reserve account with the amount required, if any, such that the Renegotiation Reserve equals the Initial Renegotiation Reserve Amount	-
Thirteenth	Any Swap termination payments other than the payments under item (iv) above	-
Fourteenth	Any amounts due to:	
	a) UBCasa under the terms of the Transfer Agreement	-
	b) the Servicer of any Servicer's Arbitration Advance under the Servicing Agreement	-
Fifteenth	Interest on the Subordinated Loan	-
Sixteenth	Interest on the Additional Subordinated Loan*	-
Seventeenth	Principal on the Subordinated Loan	-
Eighteenth	Principal on the Additional Subordinated Loan*	-
Nineteenth	Any amounts due to UBCasa:	
	a) in connection with a limited recourse loan under the terms of the Letter of Undertaking	-
	b) under the terms of the Warranty and Indemnity Agreement	-
Twentieth	Other Issuer Creditor amounts (other than amount already paid for in this Pre-Enforcement Interest Priority of Payment)	-
Twenty-first	Interest on the Junior Notes (other than the Junior Notes Additional Interest Amount and the Junior Notes Additional Remuneration)	-
Twenty-second	Junior Notes Additional Interest	-
	Interest amount available after the payment of interest on the Class A Notes	22,612,433.78

*starting from June 2010

PRE-ENFORCEMENT PRINCIPAL PRIORITY OF PAYMENT

		<i>Euro</i>
	TOTAL ISSUER PRINCIPAL AVAILABLE FUNDS	576,075,856.20
First	All amounts under items (i) to (vi), excluding item (v), of the Pre-Enforcement Interest Priority of Payments, to the extent not paid under the Pre-Enforcement Interest Priority of Payment	-
Second	(a) Up to the First Amortisation Interest Payment Date to credit the Principal Account (b) Thereafter to pay the Principal Amount Outstanding of Class A Notes	576,074,750.00
Third	Principal on the Subordinated Loan to the extent not paid under item (xvi) of the Pre-Enforcement Interest Priority of Payment	-
Fourth	Principal on the Additional Subordinated Loan to the extent not paid under item (xviii) of the Pre-Enforcement Interest Priority of Payment	-
Fifth	To pay interest on the Junior Notes should a Junior Notes Trigger Event and the related payment has not been fully done under item (xviii) of the Pre-Enforcement Interest PoP	-
Sixth	Principal Amount Outstanding of Junior Notes until the balance of the Junior Notes is € 30,000.00	-
Seventh	Principal Amount Outstanding of Junior Notes starting from the Final Redemption Date until the balance of the Junior Notes is zero	-
Eighth	Junior Notes Additional Remuneration	-

CORDUSIO RMBS SECURITISATION S.r.l. - SERIES 2008 - CASH FLOW ALLOCATION

POST-ENFORCEMENT PRIORITY OF PAYMENT

		<i>Euro</i>
	TOTAL ISSUER INTEREST AVAILABLE FUNDS	<i>not applicable</i>
First	Taxes due and payable by the Issuer (if Expenses Account is insufficient or if not paid by UBCasa)	<i>not applicable</i>
Second	Issuer/RoN expenses:	
	a) Corporate fees, expenses of Issuer	<i>not applicable</i>
	b) Fees, taxes, expenses and costs due for the listing, deposit or ratings of the Notes	<i>not applicable</i>
	c) Fees, expenses to be paid to the RoN	<i>not applicable</i>
Third	Third Party Fees and Expenses:	
	a) Principal Paying Agent and Listing Agent fees and expenses	<i>not applicable</i>
	b) Agent Bank fees and expenses	<i>not applicable</i>
	c) Computation Agent fees and expenses	<i>not applicable</i>
	d) Services fees and expenses	<i>not applicable</i>
	e) Corporate Servicer fees and expenses	<i>not applicable</i>
	f) Account Bank fees and expenses	<i>not applicable</i>
	g) Custodian fees and expenses	<i>not applicable</i>
Fourth	Amount due to the Swap Counterparty	<i>not applicable</i>
Fifth	Instalment Premiums payable to the Originator	<i>not applicable</i>
Sixth	Interest on Class A Notes:	<i>not applicable</i>
Seventh	Principal Amount Outstanding of Class A Notes	<i>not applicable</i>
Eighth	Any Swap termination payments other than the payments under item (iv) above	<i>not applicable</i>
Ninth	Any amounts due to:	
	a) UBCasa under the terms of the Transfer Agreement	<i>not applicable</i>
	b) the Servicer of any Servicer's Arbitration Advance under the Servicing Agreement	<i>not applicable</i>
Tenth	Interest on the Subordinated Loan	<i>not applicable</i>
Eleventh	Interest on the Additional Subordinated Loan	<i>not applicable</i>
Twelfth	Principal on the Subordinated Loan	<i>not applicable</i>
Thirteenth	Principal on the Additional Subordinated Loan	<i>not applicable</i>
Fourteenth	Any amounts due to UBCasa:	
	a) in connection with a limited recourse loan under the terms of the Letter of Undertaking	<i>not applicable</i>
	b) under the terms of the Warranty and Indemnity Agreement	<i>not applicable</i>
Fifteenth	Interest on the Junior Notes	<i>not applicable</i>
Sixteenth	Principal on the Junior Notes until the balance of the Junior Notes is € 30,000.00	<i>not applicable</i>
Seventeenth	On the Post -Enforcement Final Redemption Date and thereafter Principal Amount Outstanding on the Junior Notes until their redemption in full	<i>not applicable</i>
Eighteenth	Junior Notes Additional Interest Amount	<i>not applicable</i>

CORDUSIO RMBS SECURITISATION S.r.l. - SERIES 2008 - PORTFOLIO PERFORMANCE

PRINCIPAL DEFICIENCY LEDGER

	PDL at start	Amount debited to the PDL	Amount credited to the PDL	PDL at end
Class A Notes	-	-	-	-
Class Junior Notes	296,925,009.90	78,492,452.81	22,612,433.78	352,805,028.93

ARREAR CLAIMS

Description	Number of Loans	Outstanding Amount	% over the Outstanding Portfolio Amount
from 0 to 29 days	2,356	269,961,418.24	1.46%
from 30 days to 59 days	1,160	133,165,261.34	0.72%
from 60 days to 89 days	712	85,365,819.71	0.46%
from 90 days to 119 days	644	73,311,778.76	0.40%
from 120 days to 149 days	488	58,344,349.96	0.32%
from 150 days to 179 days	444	52,027,652.64	0.28%
from 180 days to 209 days	332	40,493,087.47	0.22%
from 210 days to 239 days	313	38,299,313.86	0.21%
from 240 days to 269 days	285	33,979,575.17	0.18%
from 270 days to 299 days	145	16,767,310.55	0.09%
from 300 days to 329 days	140	17,639,891.20	0.10%
from 330 days to 359 days	201	25,578,599.79	0.14%
above 360 days	-	-	0.00%
Total	7,220	844,934,058.69	4.57%

Outstanding Amount of Claims in Arrears for more than 90 days (a)	Initial Portfolio Outstanding Amount (b) *	> 90 Day Arrear Claims ratio (c) = (a)/(b)
356,441,559.40	23,789,098,387.30	1.50%

DEFAULTED CLAIMS

Cumulative Outstanding Amount of Defaulted Claims (a)	Initial Portfolio Outstanding Amount (b) *	Cumulative Defaulted Claims Ratio (c) = (a)/(b)
465,951,525.55	23,789,098,387.30	1.96%

Junior Notes Trigger Event if (c) >=7%
NOT OCCURRED

PRE-PAYMENT

Total Prepayments during previous Collection Period	Portfolio Outstanding Amount at start of previous Collection Period	Annualised Prepayment rate during previous Collection Period
323,318,690.05	19,355,198,886.71	6.95%

Annualised Weighted Average Prepayment Rate since the beginning of the first Collection Period
7.71%

CASH RESERVE

Balance at Start of Collection Period	Amounts paid in accordance with the Priority of Payments	Amounts received in accordance with the Priority of Payments	Balance at end of Interest Payment Date
880,000,000.00	-	-	880,000,000.00
Target Amount			
880,000,000.00			

RENEGOTIATION RESERVE

Balance at Start of Collection Period	Funds utilised as Interest Available Funds	Amount replenished in the period	Balance at end of Interest Payment Date
39,375,525.33	4,541,116.09	-	34,834,409.24
Initial Renegotiation Reserve Amount	Minimum Renegotiation Reserve Amount		
40,000,000.00	10,000,000.00		

* The information refers to the outstanding balance of the portfolio as of the 13/11/2008

CORDUSIO RMBS SECURITISATION S.r.l. - SERIES 2008 - PORTFOLIO DESCRIPTION

General Information about the Portfolio (a)		At the end of the current Collection Period	At the end of the previous Collection Period
a.1	Number of Loans:	189,220	194,148
a.2	Outstanding Portfolio Amount:	18,022,203,380.35	18,654,207,956.32
a.3	Average Outstanding Portfolio Amount (1):	95,244.71	96,082.41
a.4	Weighted Average Seasoning (months) (2):	54.5	51.5
a.5	Weighted Average Remaining Term (months) (2):	224.9	227.4

b. Outstanding amount	At the end of the current Collection Period				At the end of the previous Collection Period				
	Number of Loans	% on Total Number of Loans Outstanding	Amount Outstanding	% on Total Amount Outstanding	Number of Loans	% on Total Number of Loans Outstanding	Amount Outstanding	% on Total Amount Outstanding	
b.1	from 0 (included) to 10.000 (excluded) Euro	907	0.48%	5,396,811.38	0.03%	1,954	1.01%	5,135,037.07	0.03%
b.2	from 10.000 (included) to 25.000 (excluded) Euro	9,077	4.80%	179,382,727.79	1.00%	8,199	4.22%	165,142,605.13	0.89%
b.3	from 25.000 (included) to 50.000 (excluded) Euro	32,993	17.44%	1,258,412,114.06	6.98%	33,011	17.00%	1,261,672,374.47	6.76%
b.4	from 50.000 (included) to 75.000 (excluded) Euro	36,745	19.42%	2,292,571,560.55	12.72%	37,420	19.27%	2,336,644,395.90	12.53%
b.5	from 75.000 (included) to 100.000 (excluded) Euro	34,989	18.49%	3,053,411,186.60	16.94%	36,039	18.56%	3,149,110,850.89	16.88%
b.6	from 100.000 (included) to 150.000 (excluded) Euro	48,741	25.76%	5,960,401,288.70	33.07%	50,387	25.95%	6,172,515,740.36	33.09%
b.7	from 150.000 (included) to 200.000 (excluded) Euro	16,835	8.90%	2,864,169,964.31	15.89%	17,718	9.13%	3,017,337,692.21	16.18%
b.8	from 200.000 (included) to 300.000 (excluded) Euro	6,989	3.69%	1,638,597,397.38	9.09%	7,345	3.78%	1,723,603,301.66	9.24%
b.9	over 300.000 (included) Euro	1,944	1.03%	769,860,329.58	4.27%	2,075	1.07%	823,045,958.63	4.41%
b.10	Total	189,220	100.00%	18,022,203,380.35	100.00%	194,148	100.00%	18,654,207,956.32	100.00%

c. Portfolio Seasoning (a)	At the end of the current Collection Period				At the end of the previous Collection Period				
	Number of Loans	% on Total Number of Loans Outstanding	Amount Outstanding	% on Total Amount Outstanding	Number of Loans	% on Total Number of Loans Outstanding	Amount Outstanding	% on Total Amount Outstanding	
c.1	from 18 (included) to 24 (excluded) months	-	0.00%	-	0.00%	-	0.00%	-	0.00%
c.2	from 24 (included) to 48 (excluded) months	75,338	39.82%	8,217,382,922.36	45.60%	90,181	46.45%	9,900,605,080.70	53.07%
c.3	from 48 (included) to 72 (excluded) months	74,127	39.18%	7,410,429,798.06	41.12%	66,209	34.10%	6,546,117,655.53	35.09%
c.4	from 72 (included) to 96 (excluded) months	21,024	11.11%	1,575,104,382.79	8.74%	20,844	10.74%	1,491,295,639.75	7.99%
c.5	from 96 (included) to 108 (excluded) months	6,505	3.44%	360,523,881.62	2.00%	5,266	2.71%	281,603,559.95	1.51%
c.6	from 108 (included) to 120 (excluded) months	3,872	2.05%	171,468,688.35	0.95%	3,847	1.98%	165,785,396.46	0.89%
c.7	from 120 (included) to 150 (excluded) months	7,843	4.14%	277,445,871.74	1.54%	7,621	3.93%	265,148,665.84	1.42%
c.8	from 150 (included) to 180 (excluded) months	511	0.27%	9,847,835.43	0.05%	180	0.09%	3,651,958.09	0.02%
c.9	over 180 (included) months	-	0.00%	-	0.00%	-	0.00%	-	0.00%
c.10	Total	189,220	100.00%	18,022,203,380.35	100.00%	194,148	100.00%	18,654,207,956.32	100.00%

d. Remaining Term (a)	At the end of the current Collection Period				At the end of the previous Collection Period				
	Number of Loans	% on Total Number of Loans Outstanding	Amount Outstanding	% on Total Amount Outstanding	Number of Loans	% on Total Number of Loans Outstanding	Amount Outstanding	% on Total Amount Outstanding	
d.1	from 0 (included) to 12 months (excluded)	748	0.40%	5,587,150.61	0.03%	803	0.41%	6,488,271.57	0.03%
d.2	from 12 (included) to 24 months (excluded)	1,127	0.60%	21,759,828.00	0.12%	1,057	0.54%	21,785,559.80	0.12%
d.3	from 24 (included) to 48 months (excluded)	7,134	3.77%	198,061,055.36	1.10%	6,762	3.48%	195,584,352.90	1.05%
d.4	from 48 (included) to 72 months (excluded)	10,767	5.69%	449,029,750.61	2.49%	10,613	5.47%	444,312,084.45	2.38%
d.5	from 72 (included) to 96 months (excluded)	12,507	6.61%	665,311,304.50	3.69%	13,248	6.82%	714,000,782.16	3.83%
d.6	from 96 (included) to 120 months (excluded)	11,541	6.10%	704,353,759.45	3.91%	11,155	5.75%	684,687,265.62	3.67%
d.7	from 120 (included) to 160 months (excluded)	29,158	15.41%	2,165,482,159.73	12.02%	30,522	15.72%	2,282,646,099.19	12.24%
d.8	from 160 (included) to 200 months (excluded)	27,151	14.35%	2,722,289,142.57	15.11%	24,483	12.61%	2,469,965,522.92	13.24%
d.9	over 200 (included) months	89,087	47.08%	11,090,329,229.52	61.54%	95,505	49.19%	11,834,738,017.71	63.44%
d.10	Total	189,220	100.00%	18,022,203,380.35	100.00%	194,148	100.00%	18,654,207,956.32	100.00%

e. By Region of Originating Branch ^(a)	At the end of the current Collection Period				At the end of the previous Collection Period			
	Number of Loans	% on Total Number of Loans Outstanding	Amount Outstanding	% on Total Amount Outstanding	Number of Loans	% on Total Number of Loans Outstanding	Amount Outstanding	% on Total Amount Outstanding
e.1 Abruzzo	2,248	1.19%	181,863,769.28	1.01%	2,304	1.19%	189,357,591.80	1.02%
e.2 Basilicata	375	0.20%	29,309,887.01	0.16%	387	0.20%	31,109,176.15	0.17%
e.3 Calabria	1,112	0.59%	84,171,944.65	0.47%	1,130	0.58%	87,278,390.78	0.47%
e.4 Campania	8,009	4.23%	737,041,114.00	4.09%	8,187	4.22%	762,679,197.47	4.09%
e.5 Emilia - Romagna	19,811	10.47%	1,880,385,929.89	10.43%	20,322	10.47%	1,943,520,374.14	10.42%
e.6 Friuli-Venezia Giulia	6,753	3.57%	550,428,678.81	3.05%	6,895	3.55%	568,101,963.59	3.05%
e.7 Lazio	28,498	15.06%	2,849,241,357.44	15.81%	29,277	15.08%	2,961,794,689.80	15.88%
e.8 Liguria	3,620	1.91%	324,672,029.51	1.80%	3,737	1.92%	338,279,337.07	1.81%
e.9 Lombardia	39,027	20.63%	4,179,978,599.32	23.19%	40,112	20.66%	4,309,927,205.91	23.10%
e.10 Marche	4,727	2.50%	439,586,494.02	2.44%	4,869	2.51%	458,255,952.59	2.46%
e.11 Molise	615	0.33%	44,942,552.51	0.25%	626	0.32%	46,654,983.68	0.25%
e.12 Piemonte	21,414	11.32%	1,877,731,476.77	10.42%	21,984	11.32%	1,943,962,751.18	10.42%
e.13 Puglia	7,462	3.94%	583,804,997.72	3.24%	7,651	3.94%	606,982,971.63	3.25%
e.14 Sardegna	1,915	1.01%	153,371,197.56	0.85%	1,949	1.00%	157,999,962.38	0.85%
e.15 Sicilia	5,063	2.68%	421,578,769.74	2.34%	5,162	2.66%	435,273,540.95	2.33%
e.16 Toscana	9,042	4.78%	919,172,988.58	5.10%	9,330	4.81%	956,070,183.35	5.13%
e.17 Trentino - Alto Adige	601	0.32%	61,142,627.05	0.34%	618	0.32%	63,571,760.63	0.34%
e.18 Umbria	3,162	1.67%	278,173,545.76	1.54%	3,239	1.67%	287,994,499.44	1.54%
e.19 Valle d'Aosta	306	0.16%	24,440,085.88	0.14%	313	0.16%	25,818,231.76	0.14%
e.20 Veneto	25,460	13.46%	2,401,165,334.85	13.32%	26,056	13.42%	2,479,575,192.02	13.29%
e.21 Total	189,220	100.00%	18,022,203,380.35	100.00%	194,148	100.00%	18,654,207,956.32	100.00%

f. Payment Frequency	At the end of the current Collection Period				At the end of the previous Collection Period			
	Number of Loans	% on Total Number of Loans Outstanding	Amount Outstanding	% on Total Amount Outstanding	Number of Loans	% on Total Number of Loans Outstanding	Amount Outstanding	% on Total Amount Outstanding
f.1 Monthly	177,283	93.69%	17,276,688,302.18	95.86%	181,901	93.69%	17,874,858,895.05	95.82%
f.2 Twice-Monthly	-	0.00%	-	0.00%	-	0.00%	-	0.00%
f.3 Quarterly	2,815	1.49%	198,663,120.52	1.10%	2,878	1.48%	206,677,549.19	1.11%
f.4 Semi-Annual	9,122	4.82%	546,851,957.65	3.03%	9,369	4.83%	572,671,512.08	3.07%
f.5 Total	189,220	100.00%	18,022,203,380.35	100.00%	194,148	100.00%	18,654,207,956.32	100.00%

g. Payment Methodology	At the end of the current Collection Period				At the end of the previous Collection Period			
	Number of Loans	% on Total Number of Loans Outstanding	Amount Outstanding	% on Total Amount Outstanding	Number of Loans	% on Total Number of Loans Outstanding	Amount Outstanding	% on Total Amount Outstanding
g.1 Direct Debit	178,147	94.15%	17,156,146,512.00	95.19%	182,287	93.89%	17,727,208,145.88	95.03%
g.2 R.I.D.	5,818	3.07%	494,690,603.63	2.74%	5,878	3.03%	508,555,146.41	2.73%
g.3 Cash	5,255	2.78%	371,366,264.72	2.06%	5,983	3.08%	418,444,664.03	2.24%
g.4 Other	-	0.00%	-	0.00%	-	0.00%	-	0.00%
g.5 Total	189,220	100.00%	18,022,203,380.35	100.00%	194,148	100.00%	18,654,207,956.32	100.00%

h. Type of Interest	At the end of the current Collection Period				At the end of the previous Collection Period			
	Number of Loans	% on Total Number of Loans Outstanding	Amount Outstanding	% on Total Amount Outstanding	Number of Loans	% on Total Number of Loans Outstanding	Amount Outstanding	% on Total Amount Outstanding
h.1 Fixed	80,797	42.70%	7,376,938,577.73	40.93%	86,364	44.48%	8,103,967,808.05	43.44%
h.2 Floating	101,318	53.55%	9,895,095,976.73	54.91%	100,961	52.00%	9,830,889,399.55	52.70%
h.3 Optional currently Fixed	2,716	1.44%	277,886,392.77	1.54%	2,882	1.48%	299,159,276.91	1.60%
h.4 Optional currently Floating	3,890	2.06%	412,839,973.94	2.29%	3,906	2.01%	415,607,096.45	2.23%
h.5 Modular currently Fixed	499	0.26%	59,442,459.18	0.33%	35	0.02%	4,584,375.36	0.02%
h.6 Modular currently Floating	-	0.00%	-	0.00%	-	0.00%	-	0.00%
h.7 Total	189,220	100.00%	18,022,203,380.35	100.00%	194,148	100.00%	18,654,207,956.32	100.00%

(a) The information refers to the mortgages not classified as default as at the end of the collection period

(b) The information refers to the Region where the branch originating the mortgage loan is located

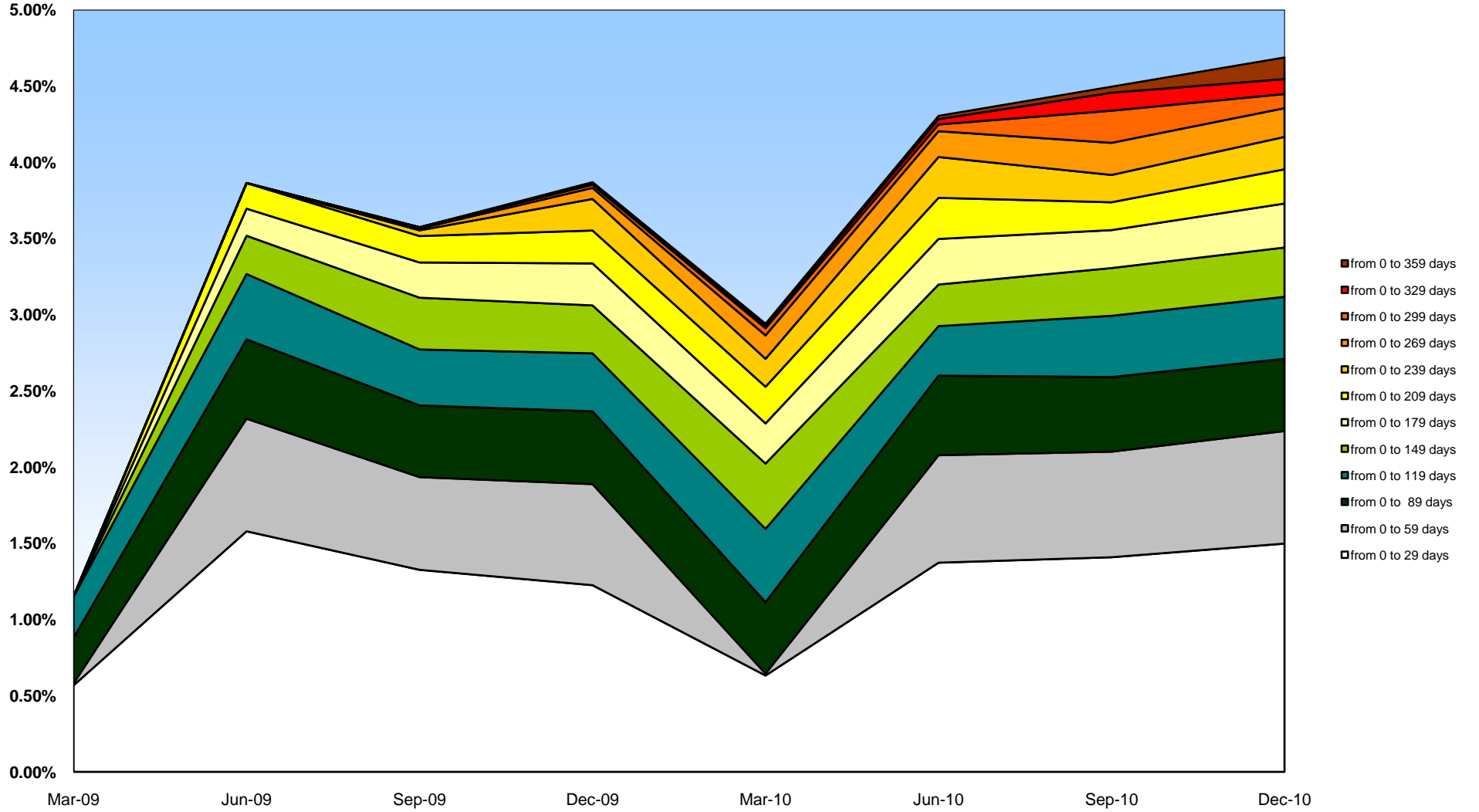
(1) Arithmetic average

(2) Weighted by the outstanding principal amount

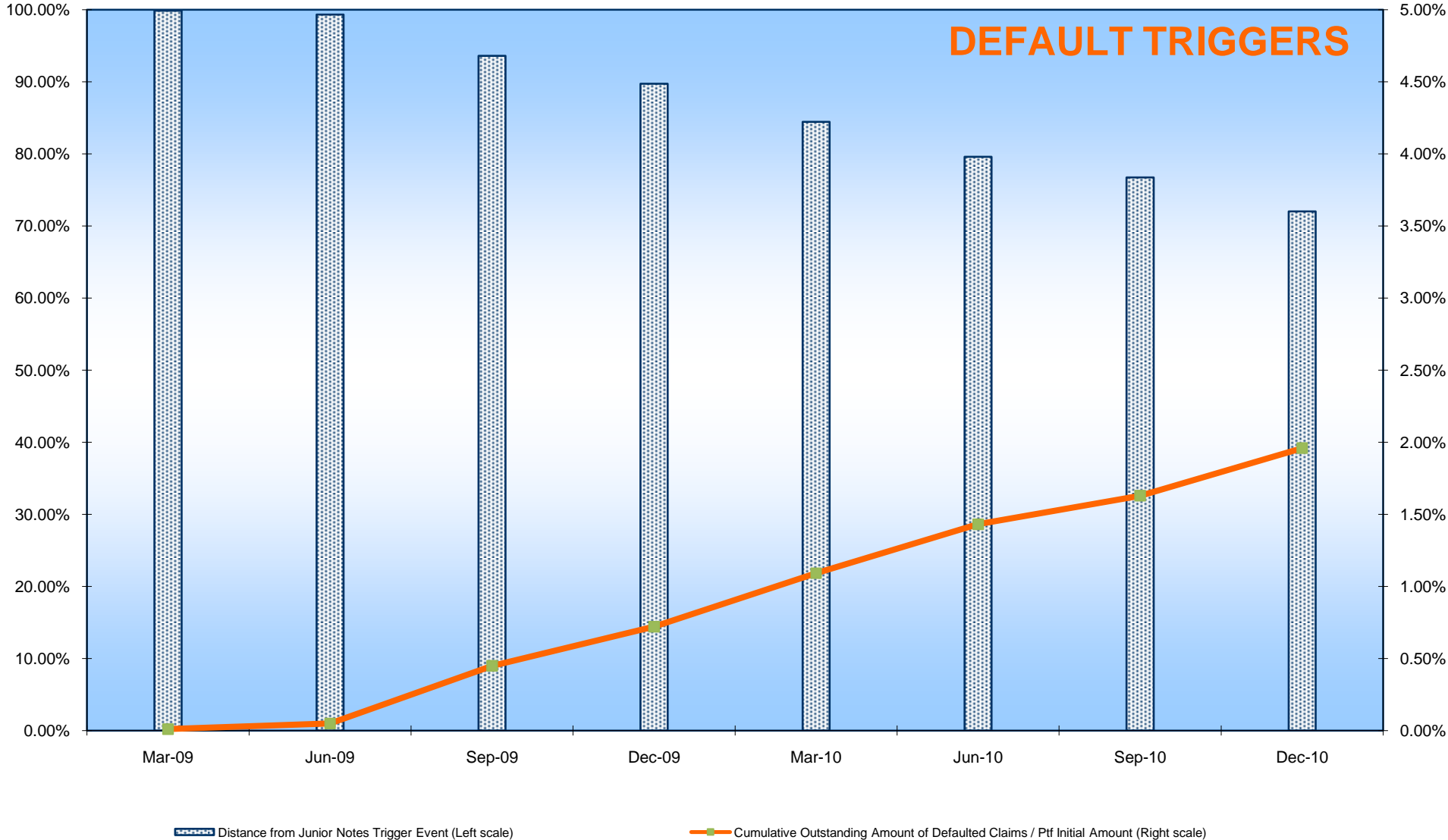
(3) Calculated as the difference between the maturity date and the date representing the end of the collection period

(4) Calculated as difference between the maturity and the servicing report date

DELINQUENCIES



DEFAULT TRIGGERS



WEIGHTED AVERAGE CPR

